

# B5

## 1 Bedroom + 1 Bathroom

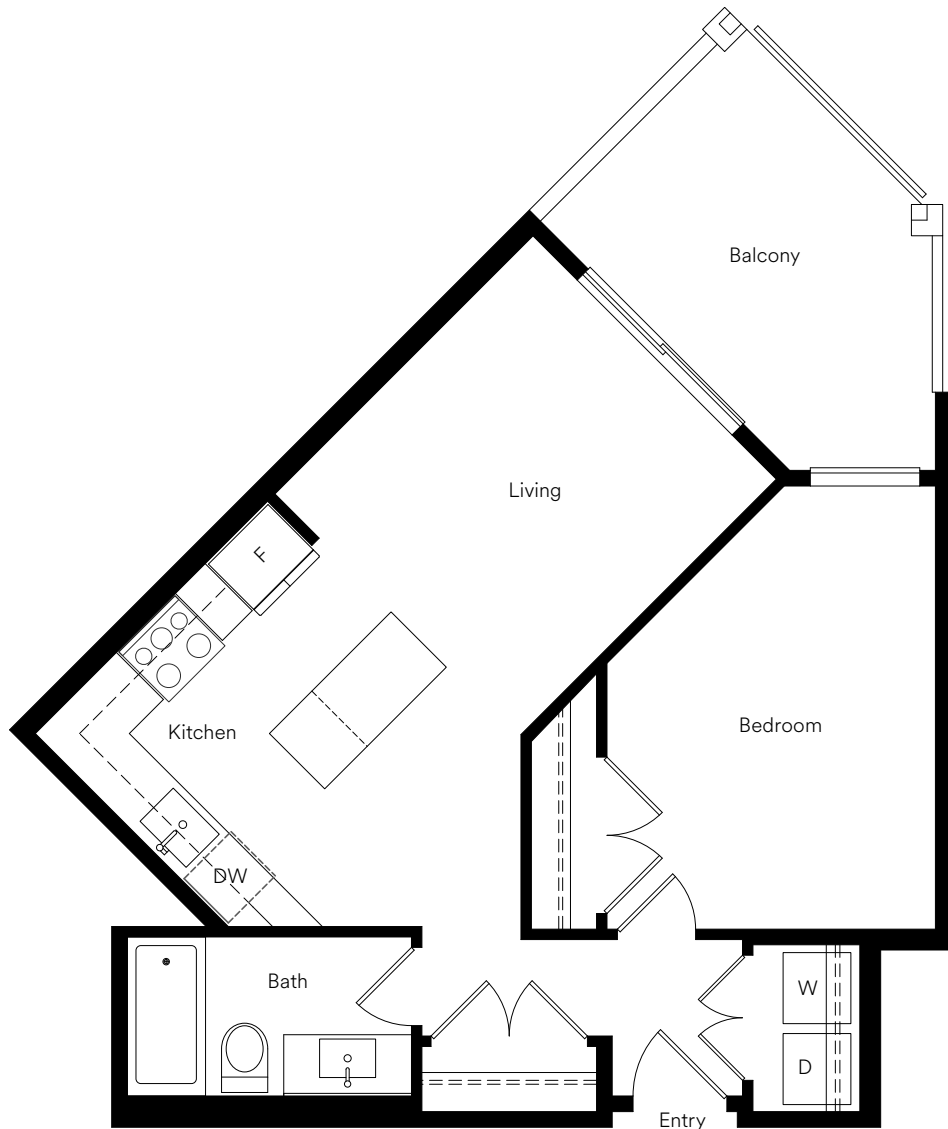
Interior: 594 Sq Ft

Exterior: 109 Sq Ft

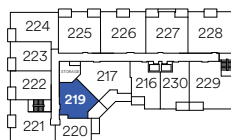
# INTERCHANGE

Guildford + Surrey City Centre

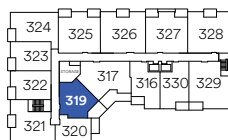
South Building



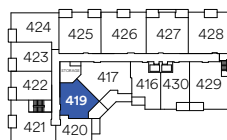
Level 2



Level 3



Level 4



InterchangeLiving.com



In our continuing effort to improve and maintain the high standard of the Interchange development, the developer reserves the right to modify or change plans, specifications, features, and prices without notice. Materials may be substituted with equivalent or better at the developer's sole discretion. All dimensions and sizes are approximate and are based on architectural measurements. As reverse, flipped, and/or mirrored plans occur throughout the development, please see architectural plans for the exact unit layout if material to your decision to purchase. Please ask one of our sales staff to reference the most recent set of architectural construction drawings for dimensions and other details. Please refer to the disclosure statement for specific offering details. E&O.E. Sales and Marketing provided by Fifth Avenue Real Estate Marketing Ltd. 604-583-2212 www.fifthave.ca